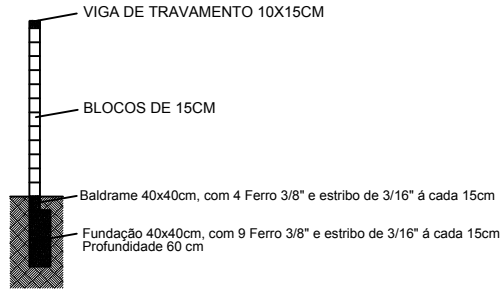
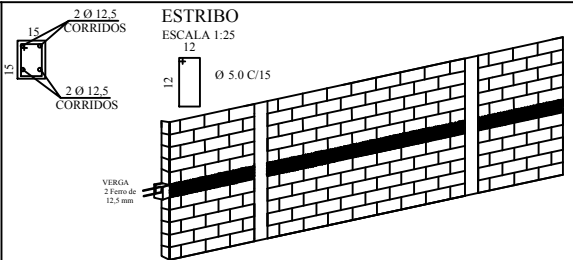
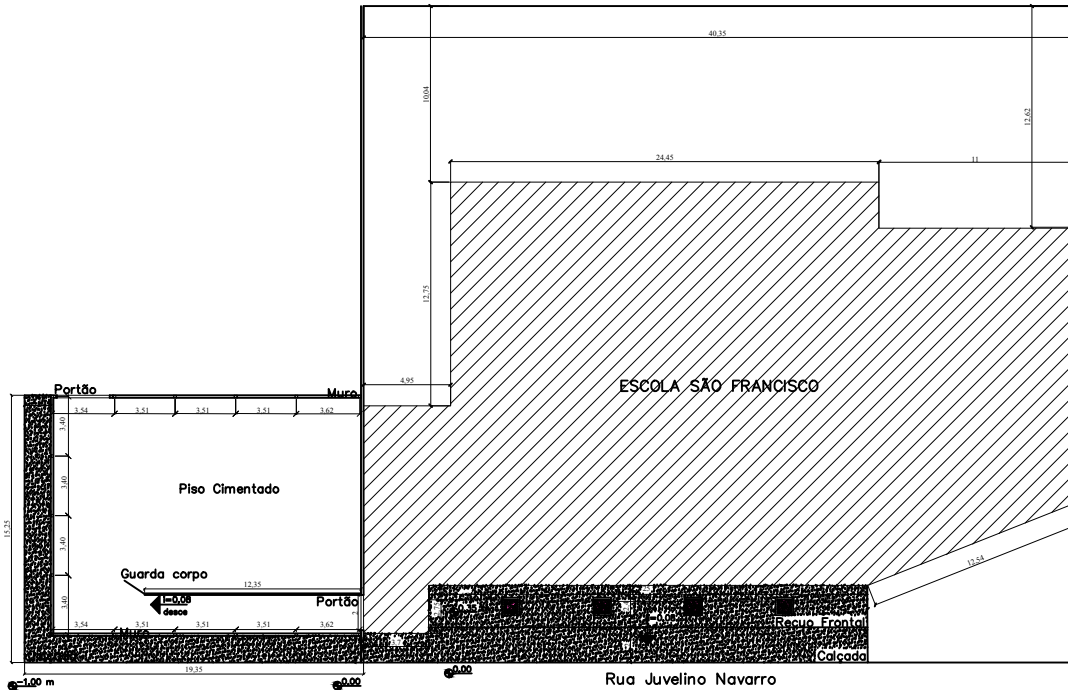
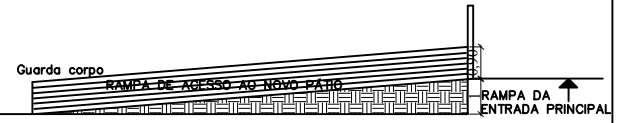
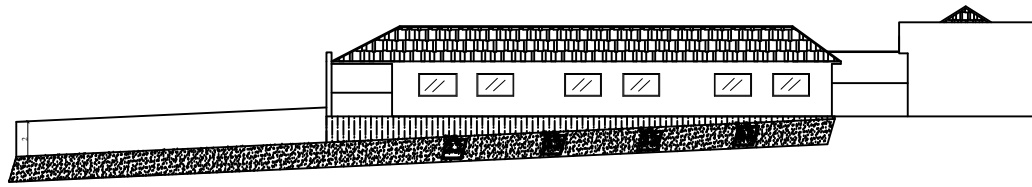
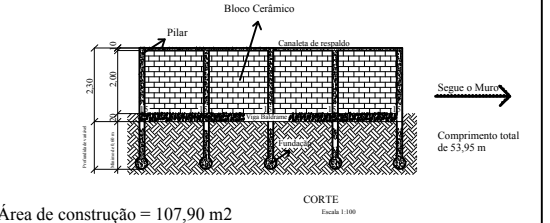
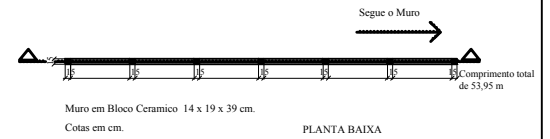
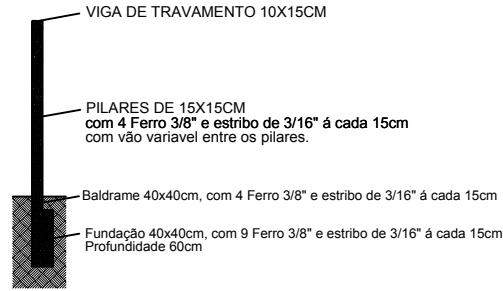


### CORTE ESQUEMÁTICO VIGAS



### CORTE ESQUEMÁTICO PILARES



Responsável Técnico	CREA / CAU	Escr.
Marcio A.E. Madeira Engenheiro Civil	176.622/D	
Proprietário	CPF	INDICADORES
Edson José Ferreira Prefeito do município de Cabo Verde - MG	342.391.116-88	
Título	Projeto de Muro de Fechamento, Piso Cimentado e Calçada da Escola Municipal São Francisco	
Endereço	Rua Juvelino Navarro, Distrito Serra dos Lemes, Cabo Verde - MG	
Áreas	Data	Folha
Piso: 235,88 m <sup>2</sup> Muro: 107,90 m <sup>2</sup> Calçada: 166,07 m <sup>2</sup>	Junho 2018	
		01/01